



HODSONS

ASKING PRICE

£315,000

Attlee Crescent

Sandal, WF2 6RF



HODSONS

PROPERTY SUMMARY

This detached family home occupies an attractive corner plot position within a highly regarded residential area. The house offers spacious living accommodation which briefly comprises; entrance hall, lounge, separate dining room, fitted kitchen and ground floor W.C. To the first floor are four bedrooms and a bathroom.

There are lawned gardens to both the front and rear and a drive provides off road parking leading to a detached single garage.

Attlee Crescent is located within a well established residential area, ideal for family buyers being accessible to an excellent range of amenities including schools for all age groups and public transport services.

4



1



2



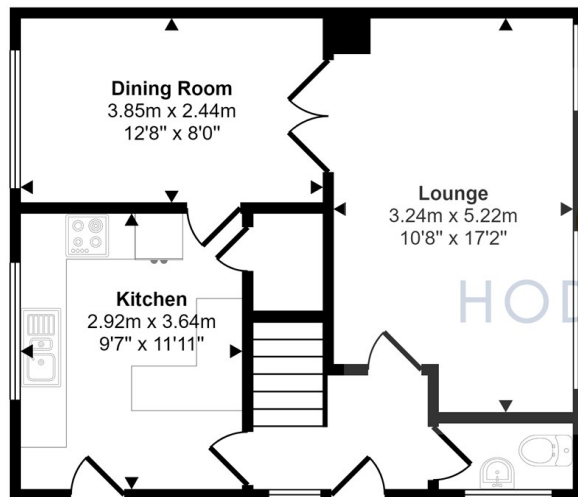


HODSONS

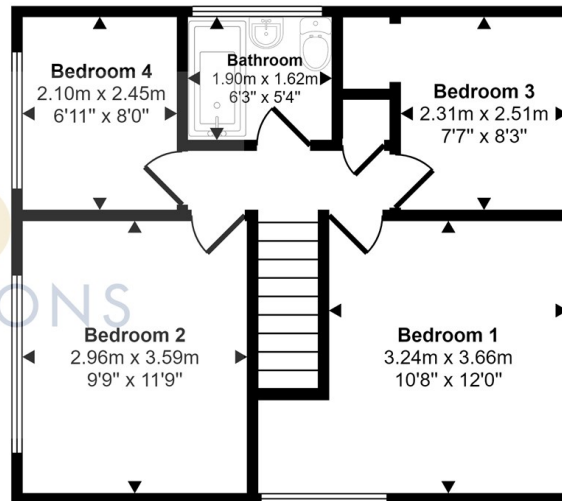




HODSONS



Ground Floor



First Floor

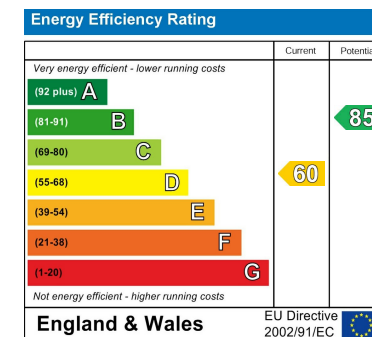
This floorplan is only for illustrative purposes and is not to scale. Measurements of rooms, doors, windows, and any items are approximate and no responsibility is taken for any error, omission or mis-statement. Icons of items such as bathroom suites are representations only and may not look like the real items. Made with Made Snappy 360.

LOCAL AUTHORITY
Wakefield Metropolitan District council

TENURE
Freehold

COUNCIL TAX BAND
D

VIEWINGS
By prior appointment only



Agents Note: Whilst every care has been taken to prepare these particulars, they are for guidance purposes only. All measurements are approximate and are for general guidance purposes only and whilst every care has been taken to ensure their accuracy, they should not be relied upon and potential buyers/tenants are advised to recheck the measurements



OFFICE ADDRESS
37-39 George Street
Wakefield
West Yorkshire
WF1 1LX

OFFICE DETAILS
01924 200544
wakefield@hodsonsproperty.co.uk
www.hodsonsproperty.co.uk